

National Curriculum

ARTIST-BLACKSMITH'S ASSOCIATION OF NORTH AMERICA
47 WALNUT STREET, SUITE 200 PO BOX 462 JOHNSTOWN, PA 15907

NATIONAL CURRICULUM LEVEL-IIA GRILLE

MODEL & DRAWINGS: RUSSELL EVERTZ ORIGINAL DESIGN: JOHN MCLELLAN

DATE 06-11-22 SCALE 1:2 SHEET SIZE A SHEET 1 OF 12 REVISION IR

(814) 254-4817

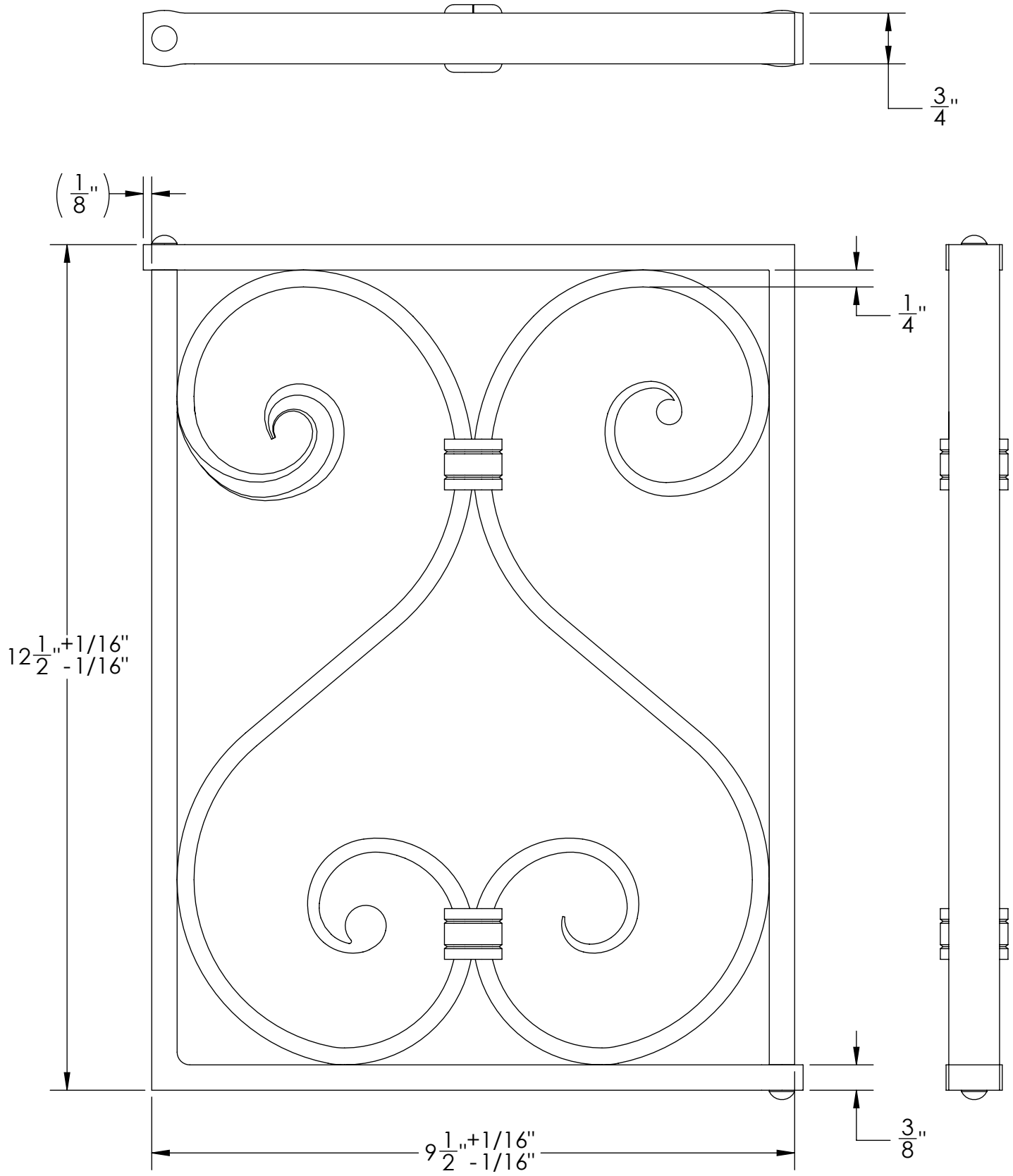
ABANA.org

NOTES:

1. THIS GRILLE IS ONE OPTION TO FULFILL ABANA'S LEVEL IIA GRILLE REQUIREMENT. BLACKSMITHS MAY SUBMIT THEIR OWN DRAWING TO AN INSTRUCTOR FOR PREAPPROVAL PRIOR TO BUILDING THEIR OWN DESIGN.
2. REFER TO ABANA CURRICULUM FOR ADDITIONAL INFORMATION.
3. GRILLE WILL BE CHECKED TO DIMENSIONS IN DRAWING. DIMENSIONS IN PARENTHESES ARE FOR REFERENCE ONLY AND WILL NOT BE CHECKED. THE LAST TWO SHEETS AND INDIVIDUAL SCROLLS IN THIS DRAWING WILL BE FULL SIZE IF PRINTED WITH NO ADDITIONAL SCALING ON 8 1/2" X 11" PAPER.
4. IF GRILL OR ELEMENTS WILL BE USED IN RAILING, CHECK THAT A 4" BALL WILL NOT PASS THROUGH GRILLE.
5. SHAPES OF SCROLLS NEED NOT MATCH DRAWING EXACTLY, AS LONG AS SCROLLS FLOW SMOOTHLY, ARE FREE OF KINKS OR TIGHT BENDS, AND HAVE COMPLIMENTARY NEGATIVE SPACE BETWEEN TURNS.
6. THE LOCATION OF INDIVIDUAL SCROLLS MAY DIFFER FROM THE DRAWING. A SYMMETRIC GRILLE MAY BE CONSTRUCTED PROVIDED OTHER SCROLL SAMPLES ARE SUBMITTED WITH THE GRILLE.
7. SCROLLS MAY BE FASTENED TO FRAME USING RIVETS, COLLARS, OR SCREWS WITH TAPPED HOLES.
8. THE SCROLLS MAY BE FASTENED DISCRETELY BEHIND COLLARS USING ANY METHOD.
9. RELIEVE ALL EDGES BY HAMMERING (ABOUT 1/32"-1/16").
10. VISIBLE USE OF POWER TOOLS IS PROHIBITED (IE GRINDERS, SANDERS, ETC.). INCONSEQUENTIAL USE OF POWER TOOLS IS ACCEPTABLE (IE BANDSAW, DRILL, ETC.).
11. GRILLE SHOULD BE FREE OF LOOSE SCALE.
12. FINISH GRILLE USING A TRADITIONAL BLACKSMITH FINISH.
13. MATERIALS TO COMPLETE GRILLE:
 - 3/8" X 3/4" FLAT STOCK FOR FRAME (MAY SUBSTITUTE 3/8" X 1" FLAT STOCK).
 - 1/4" X 3/4" FLAT STOCK FOR SCROLLS.
 - 1/8" X 3/4" FLAT STOCK FOR COLLARS (OTHER SIZES MAY ALSO BE USED)

THIS GRILLE WAS DEVELOPED, MODELED, AND DRAWN, AS A JOINT PROJECT BETWEEN NORTHERN ROCKIES BLACKSMITH ASSOCIATION, CALIFORNIA BLACKSMITH ASSOCIATION, AND ARTIST-BLACKSMITH'S ASSOCIATION OF NORTH AMERICA.

REV	SHEETS	REVISIONS	BY	CHKD.	DATE
IR	ALL	INITIAL RELEASE	RE	FA	06-11-22





2X PUNCH FOR (5/16") TENON

2X FORGE INTEGRAL (5/16")
TENON AND RIVET END

$R0^{+1/16}$
 -0
UPSET SQUARE CORNER

2X OVERHANG
DIMENSION
NOT CRITICAL

2X COLLAR
(1/8" X 3/4")

CHECK THAT A $\phi 4$ "
CIRCLE WILL NOT FIT
THROUGH GRILLE IF
USED IN RAILING

$R \frac{3}{16}^{+1/16}$
 $-1/16$

UPSET
SQUARE CORNER
WITH RADIUS

2X 3/8" X 3/4" STOCK
(MAY USE 3/8" X 1" STOCK)

2X 1/4" X 3/4" STOCK

SHAPES OF SCROLLS
NEED NOT MATCH
DRAWING EXACTLY

BEVELED BLOWN OVER LEAF
OR BEVELED SCROLL (SHOWN)

FISHTAIL BOLT END OR
SOLID SNUB END (SHOWN)

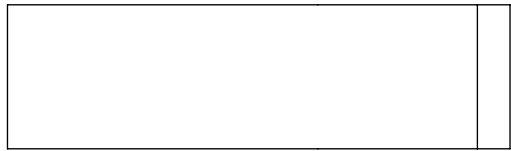
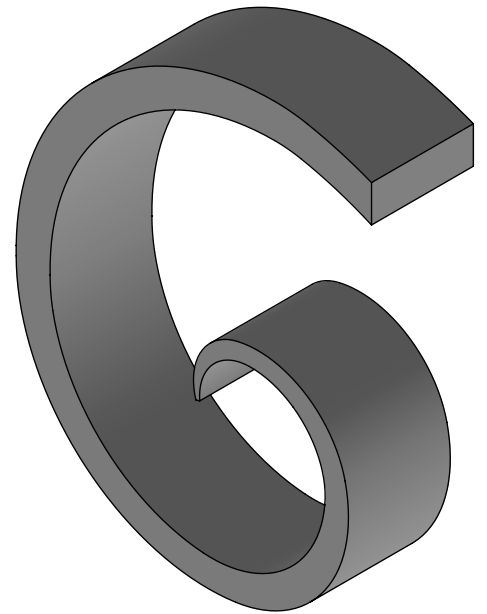
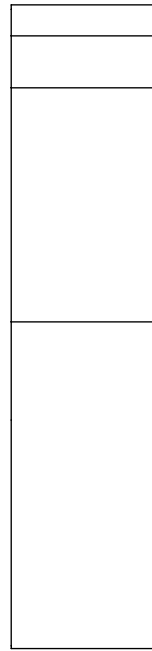
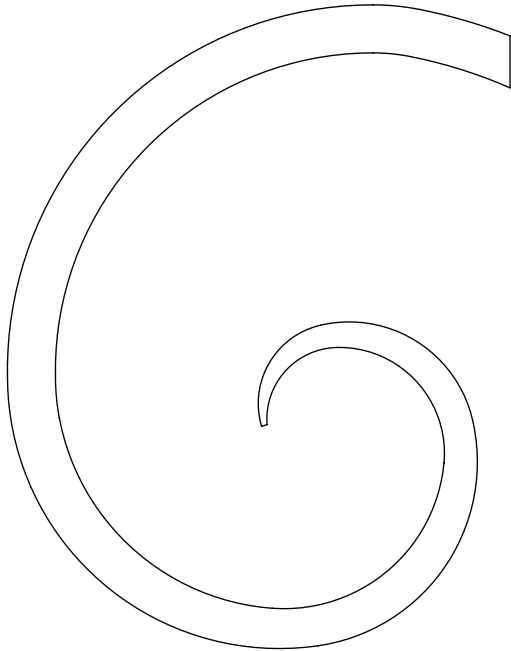
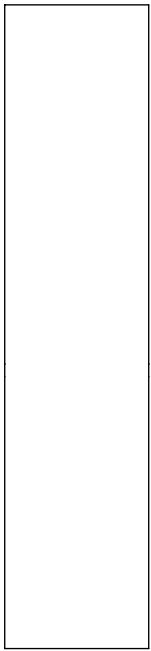
HALF PENNY SNUB END
(SHOWN)

INCISE COLLAR WITH
ONE OR TWO LINES

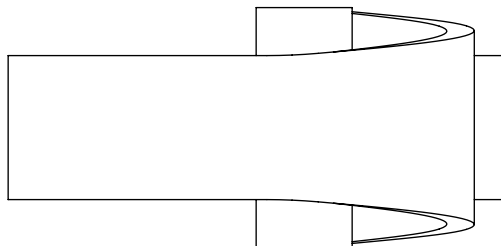
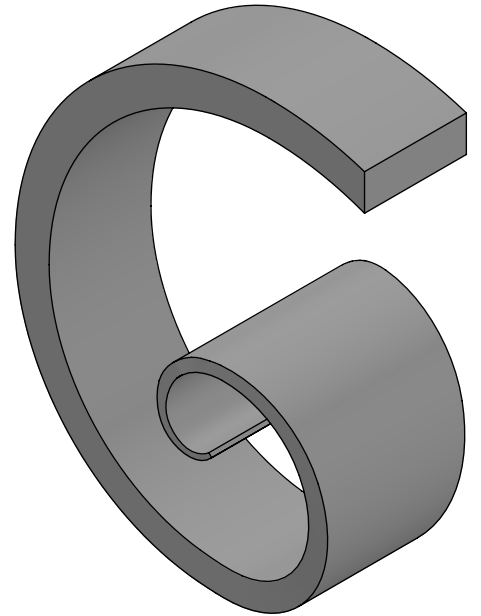
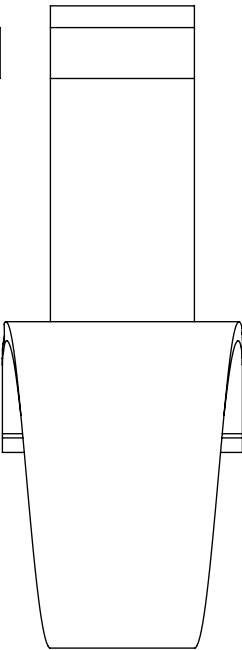
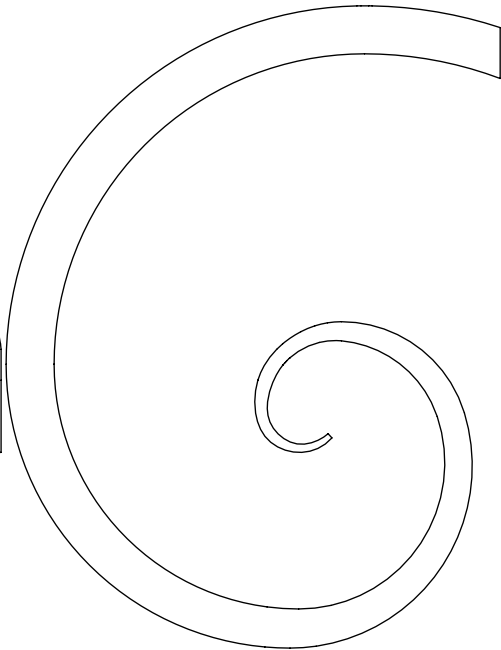
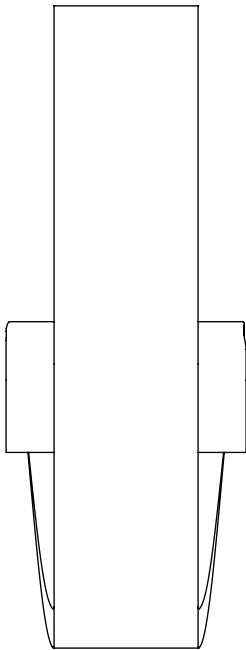
SCROLLS MAY BE SYMMETRIC
PROVIDED ADDITIONAL SAMPLE
SCROLLS ARE SUPPLIED WITH THE GRILLE

RIBBON SCROLL

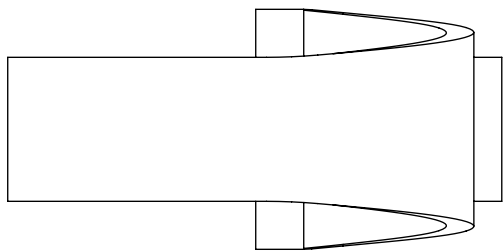
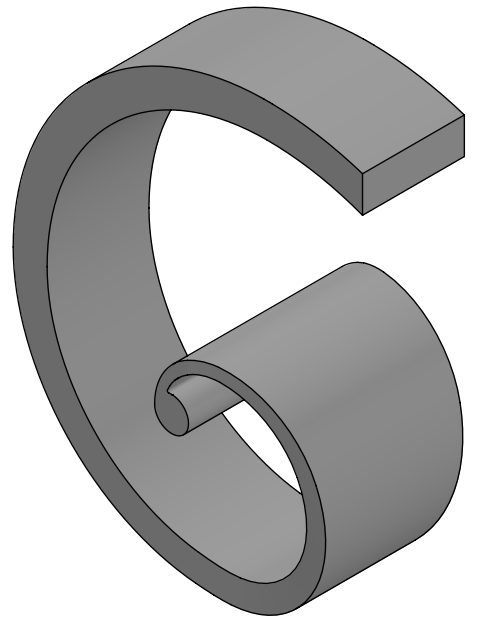
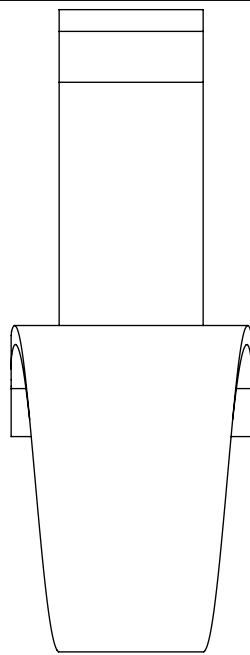
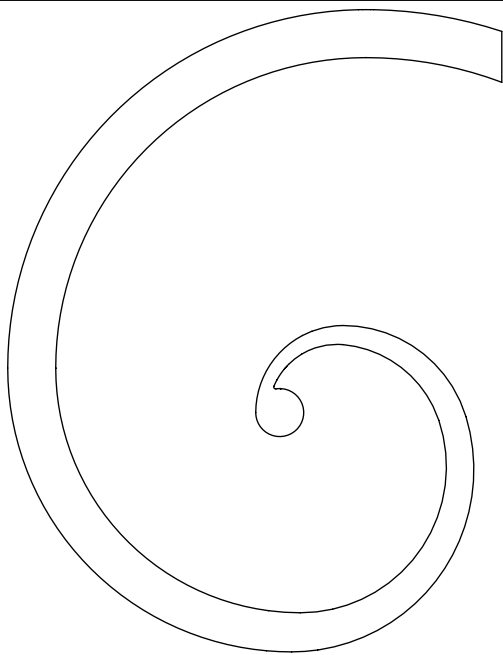
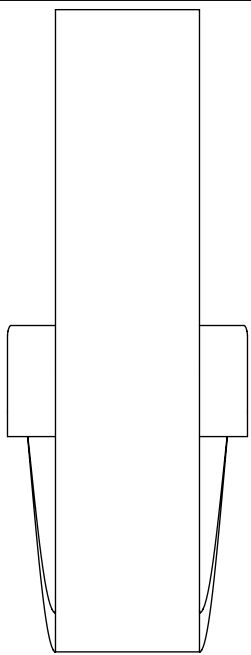
SCROLL LAYOUT DETAILS



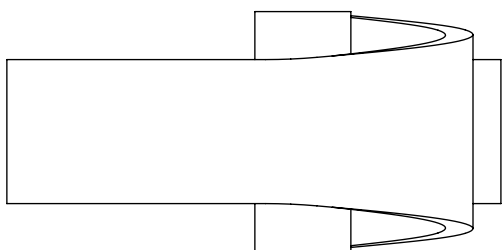
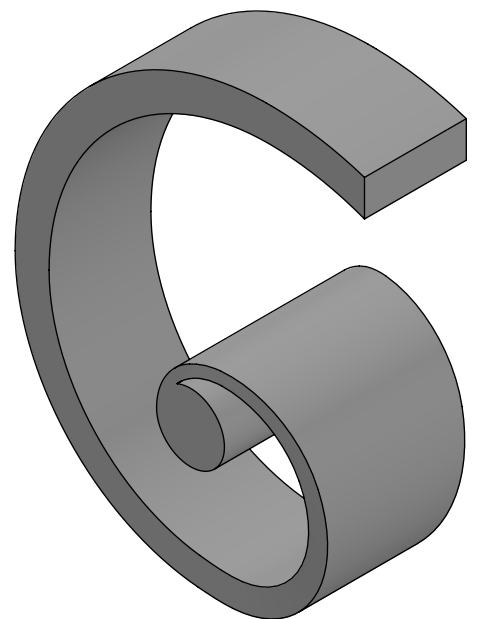
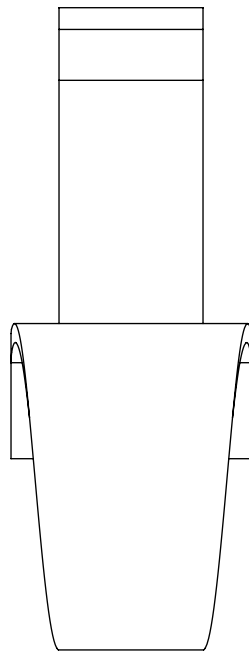
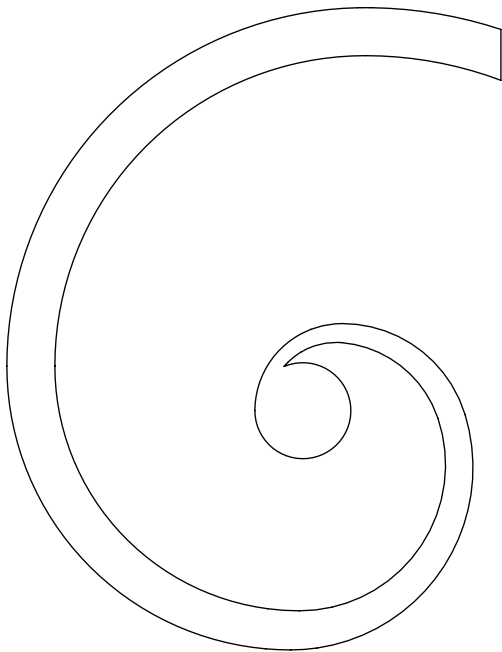
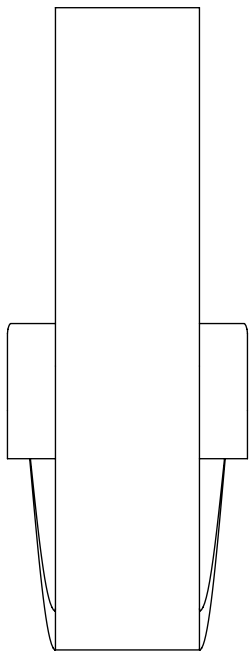
RIBBON SCROLL



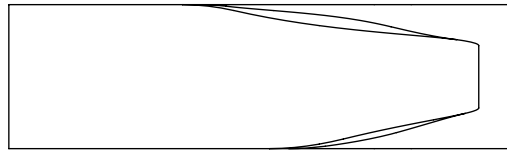
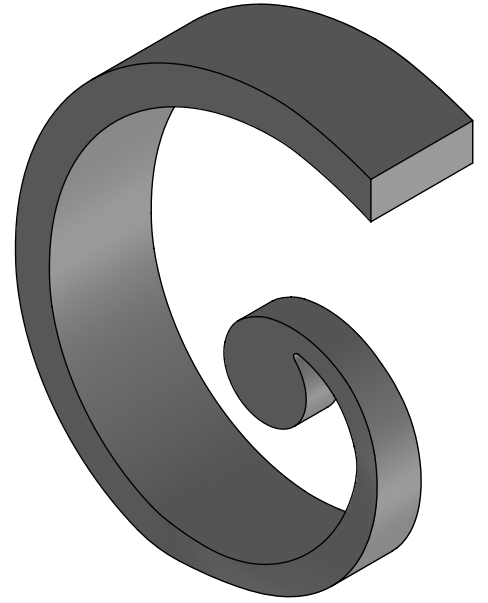
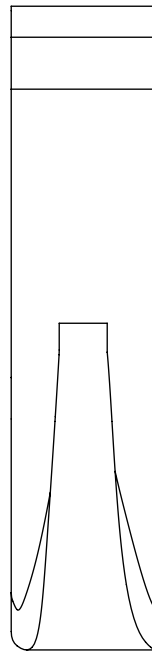
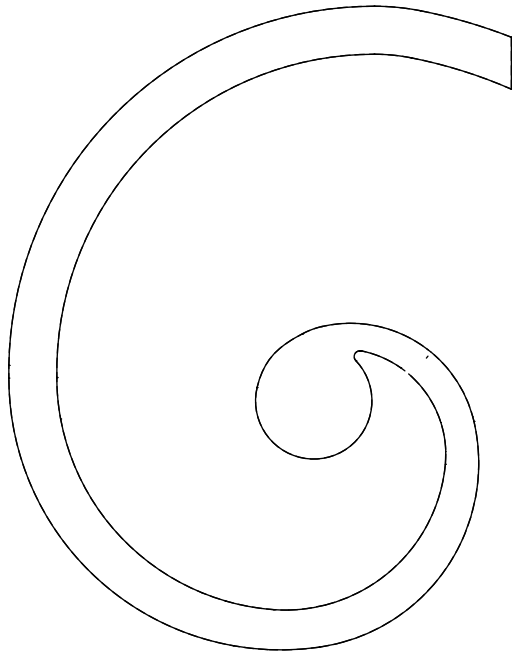
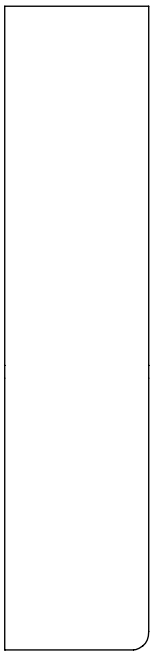
FISHTAIL SCROLL



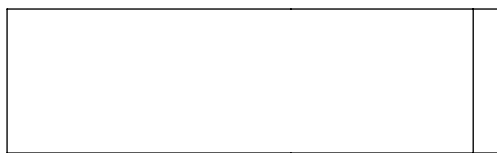
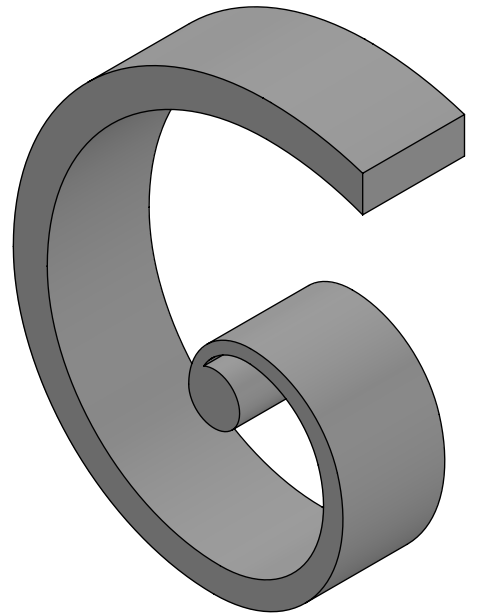
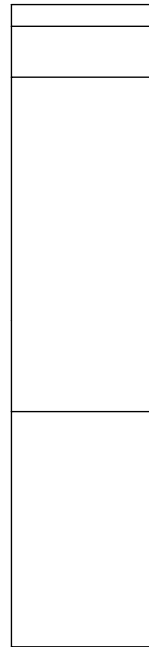
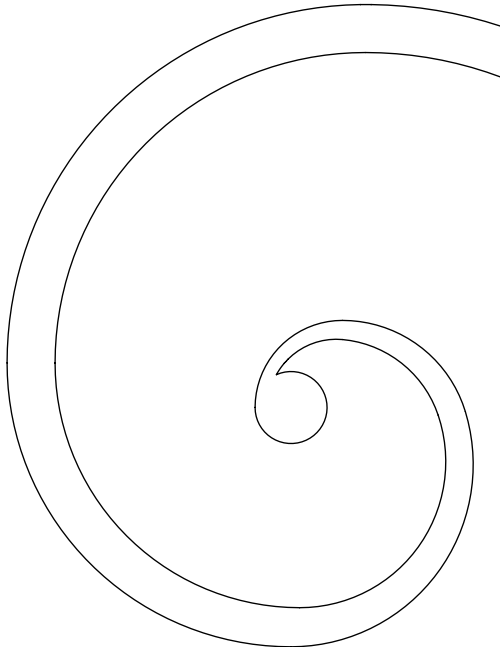
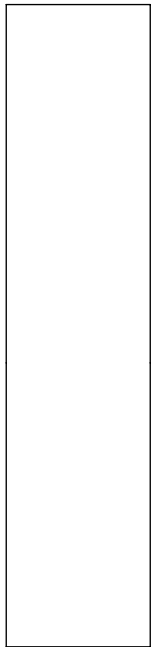
FISHTAIL SNUB END SCROLL



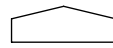
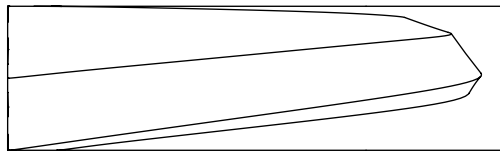
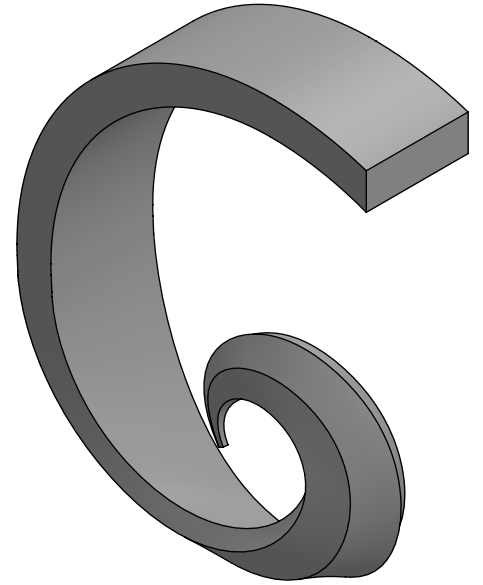
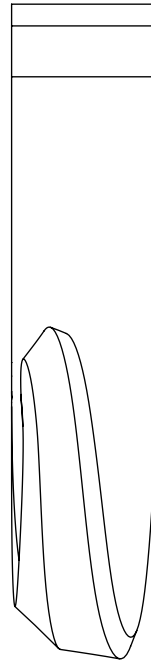
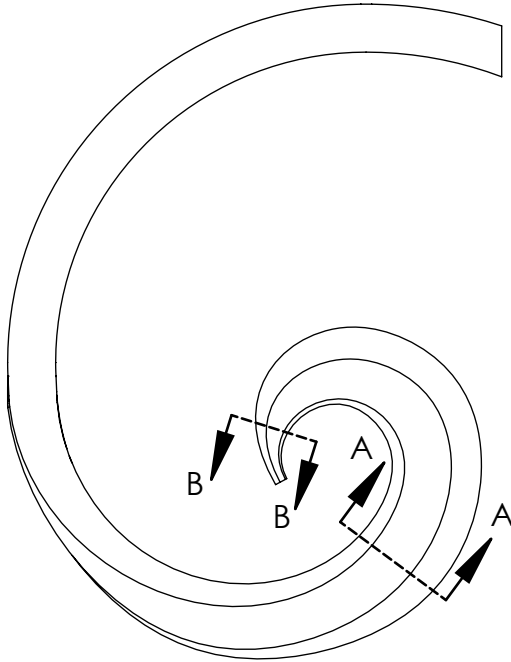
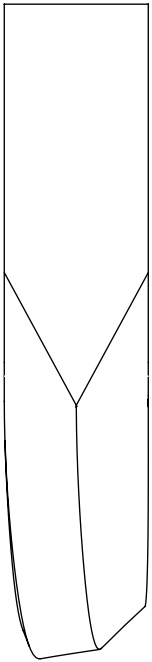
FISHTAIL BOLT END SCROLL



HALF PENNY SNUB END SCROLL



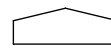
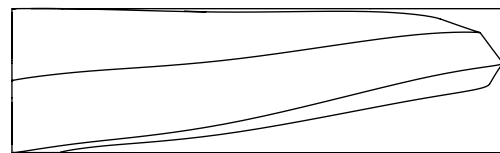
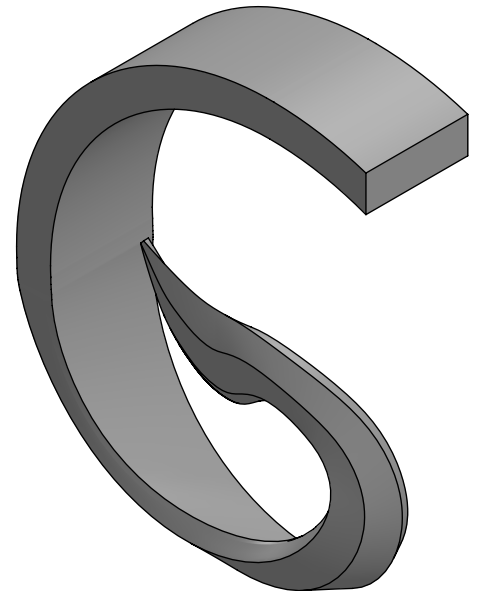
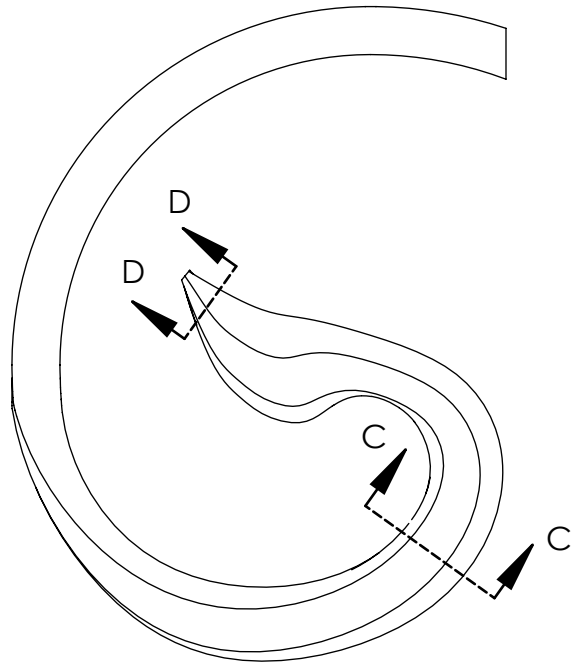
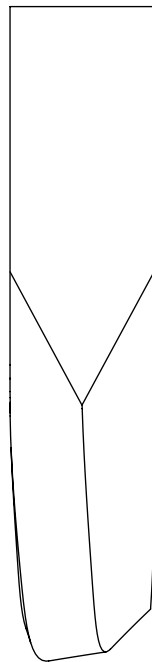
SOLID SNUB END SCROLL



BEVELED SCROLL

SECTION A-A

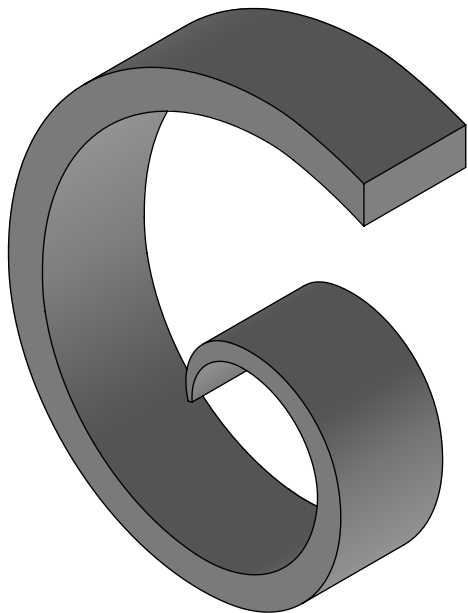
SECTION B-B



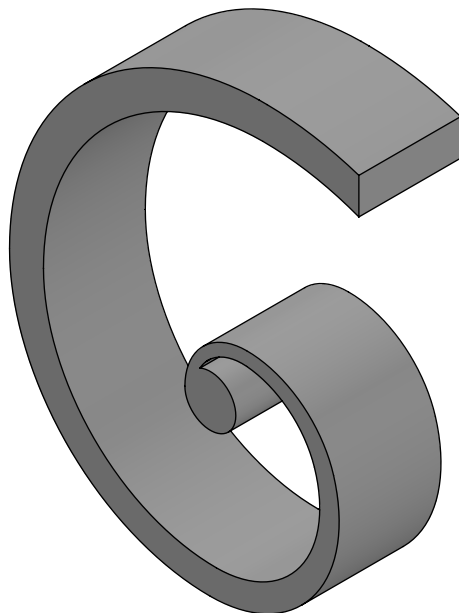
BEVELED BLOWN OVER LEAF SCROLL

SECTION C-C

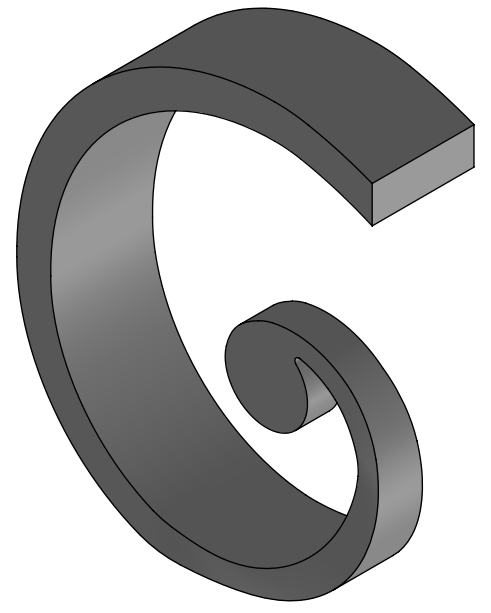
SECTION D-D



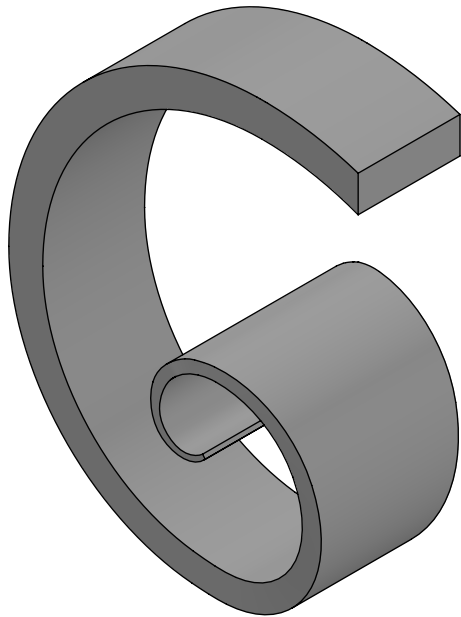
RIBBON SCROLL



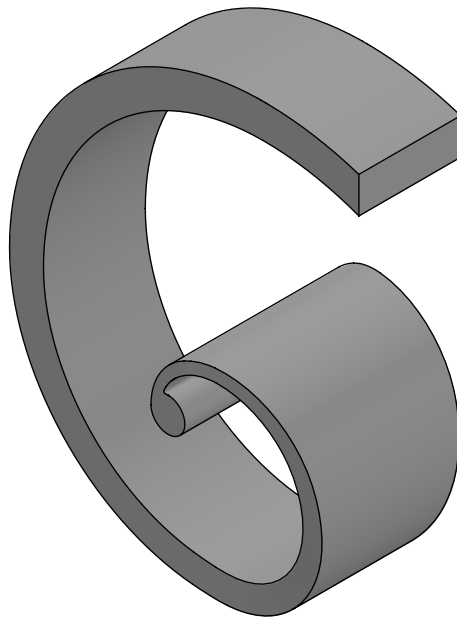
SOLID SNUB END SCROLL



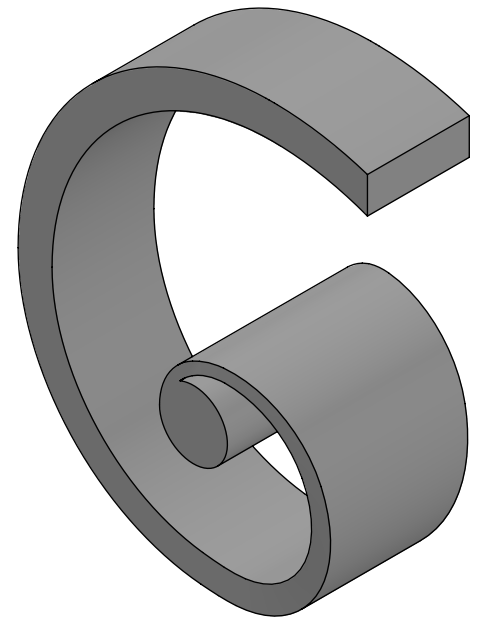
HALF PENNY SNUB END SCROLL



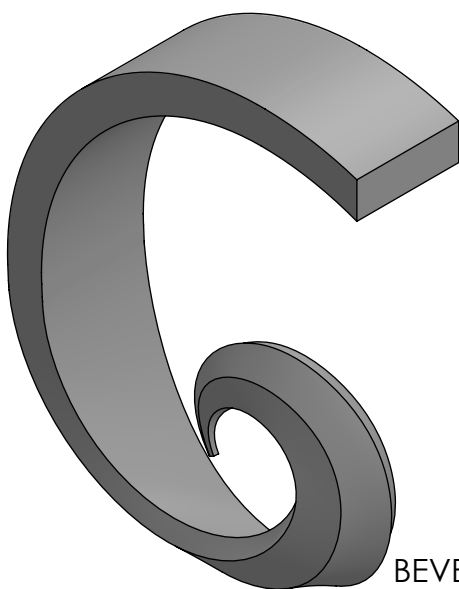
FISHTAIL SCROLL



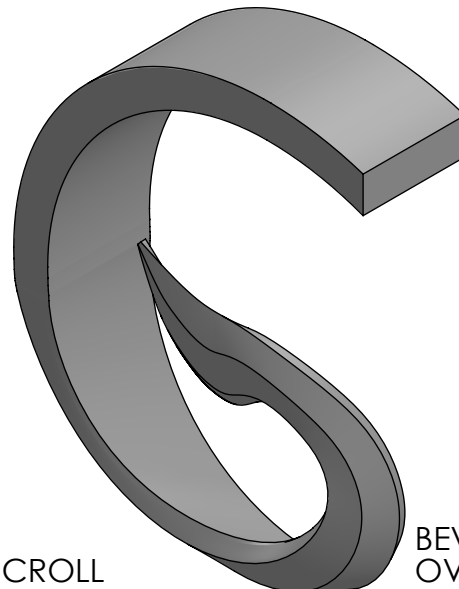
FISHTAIL SNUB END SCROLL



FISHTAIL BOLT END SCROLL



BEVELED SCROLL

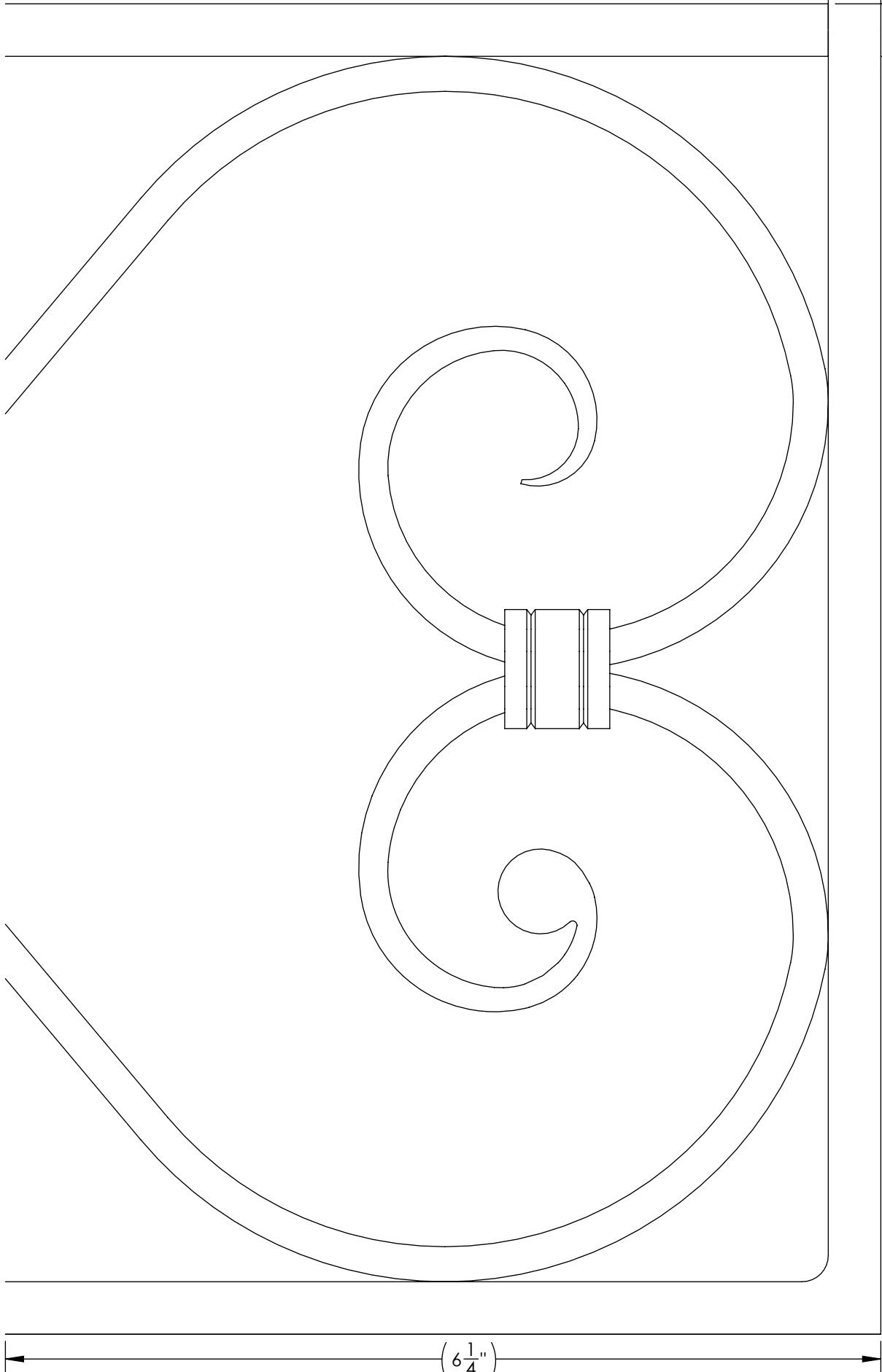


BEVELED BLOWN OVER LEAF SCROLL

$9\frac{1}{2} + \frac{1}{16}$ "
 $- \frac{1}{16}$ "

$(6\frac{1}{4})$ "

TAPE NEXT SHEET HERE



$9\frac{1}{2} + \frac{1}{16}$
 $- \frac{1}{16}$ "

$(6\frac{1}{4})$ "